

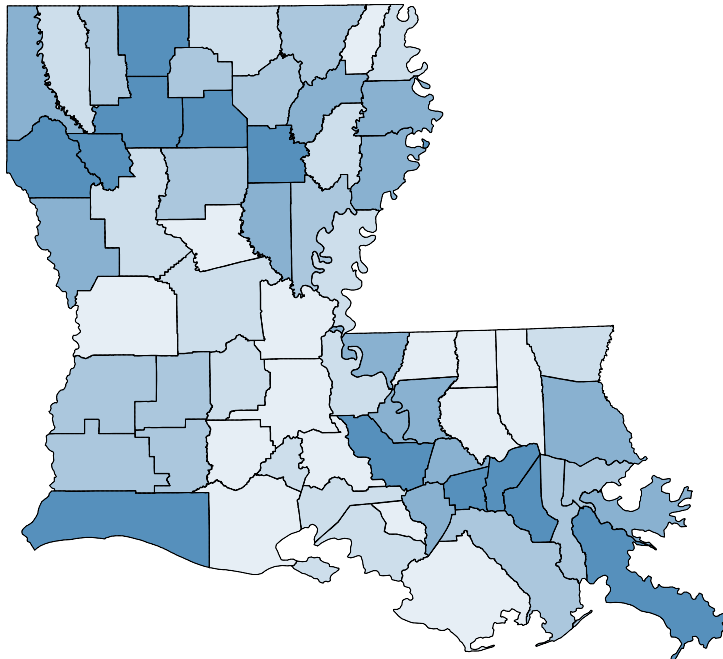
Funding

Minimum Foundation Program (MFP)

- The Minimum Foundation Program (MFP) is a formula used to allocate state funding to local districts.
- The Louisiana Constitution requires the State Board of Elementary and Secondary Education (BESE) to annually develop and adopt a formula which determines the cost of a minimum foundation program of education in all public elementary and secondary schools as well as to equitably allocate the funds to parish and city school systems. Once BESE adopts the formula, the Legislature passes it by Concurrent Resolution without making changes to the formula.
- The MFP formula also includes factors that provide more funding for special classes of students (e.g., at-risk and special education students).
- State law requires that 70% of MFP revenues be spent for instructional purposes.

Total State and Local Funding per Pupil by Parish

The map represents the per-pupil funding from local and state sources for each parish in the state. Parishes receive varying levels of funding based on student population needs and local tax revenue.



Total State and Local Per-Pupil Funding (2011-12)

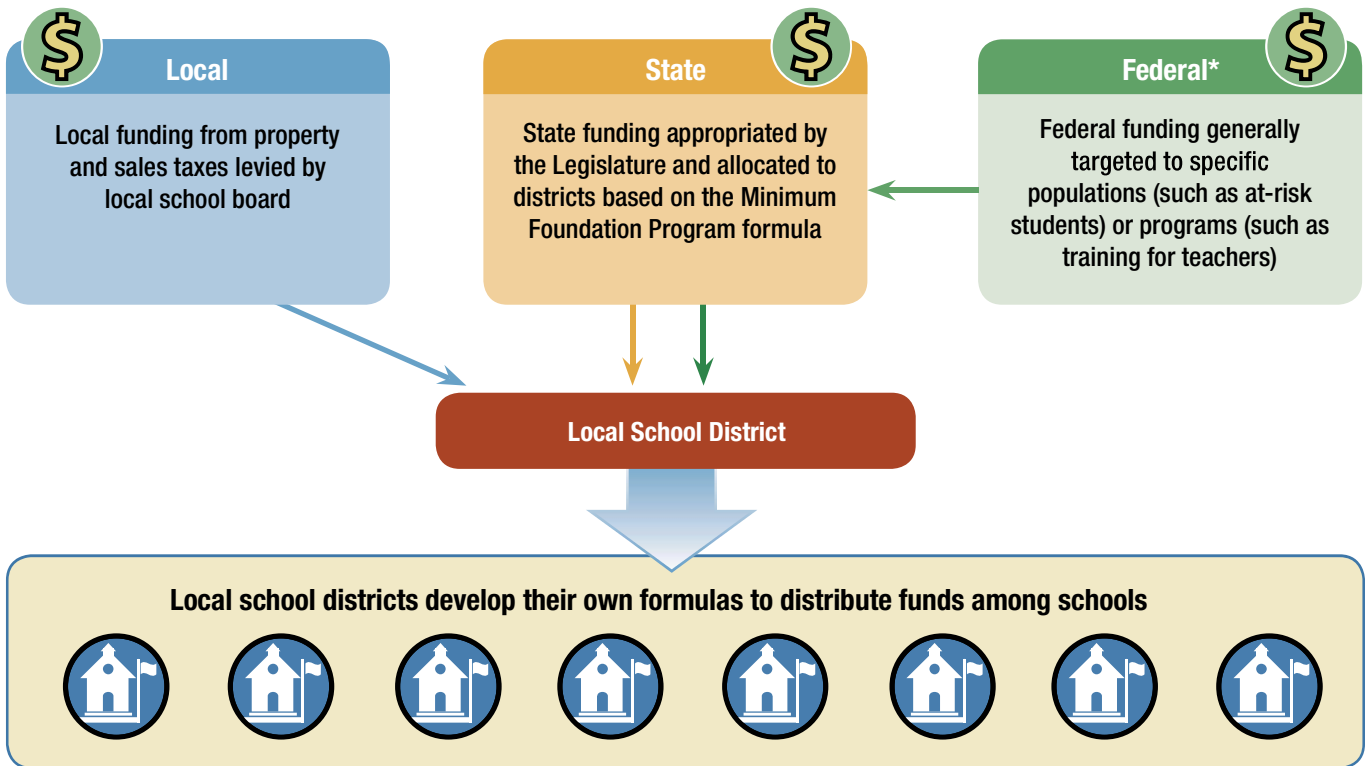
- Bottom Fifth: \$6,690 - \$8,270
- 2nd Fifth: \$8,280 - \$8,970
- 3rd Fifth: \$8,980 - \$9,480
- 4th Fifth: \$9,490 - \$10,550
- Top Fifth: \$10,560 - \$18,910

Note: The map does not include funding for the following school districts: City of Monroe, City of Bogalusa, Zachary Community, City of Baker, Central Community, and the Recovery School District.

Source: Louisiana Department of Education, Minimum Foundation Budget Letter, 2011

Funding Structure for Louisiana Public Schools

Public schools in Louisiana receive funding from local, state, and federal sources.



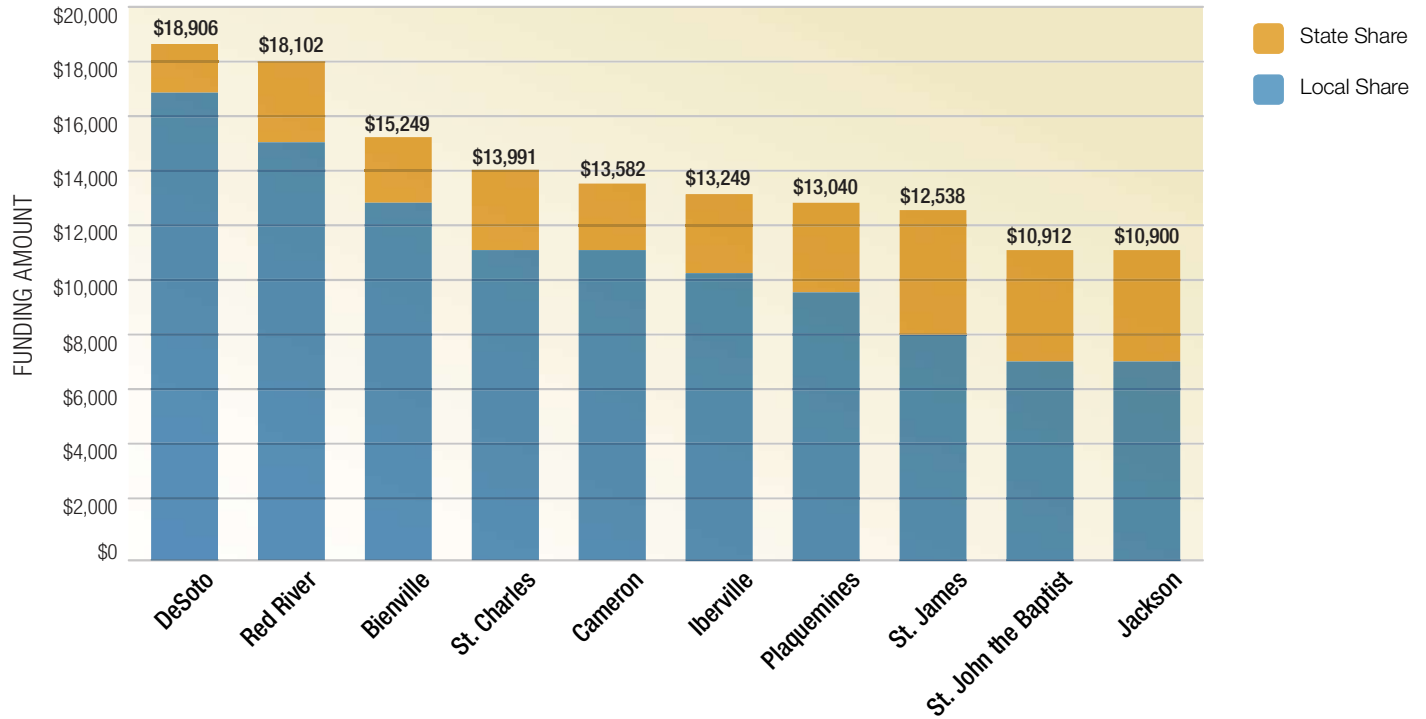
* Federal funding programs include: Title I-Improving the Academic Achievement of the Disadvantaged; Title II-Preparing, Training, and Recruiting High Quality Teachers and Principals; Title III-Language Instruction for Limited English Proficient and Immigrant Students; Title IV-Safe and Drug Free Schools; Title V-Innovative Education Program Studies; the Individuals with Disabilities Education Act (IDEA); the National School Lunch Program; and the Public Charter Schools Federal Grant Program, among others.

| Local School District Funding Formulas | Charter School Funding | Recovery School District (RSD) Funding |
|---|--|--|
| <p>The following are three of the many ways local districts allocate state and local* funding to schools:</p> <p>Flat Funding Schools receive funding per pupil based on the total amount of state and local funding divided by the total number of students in the district.</p> <p>Staff-Based Funding Schools receive funding based on the number and experience level of the staff at that school.</p> <p>Student-Based Funding Schools receive funding based on the individual needs of the students attending the school as determined by the MFP.</p> <p>*Federal funding is allocated according to federal program requirements.</p> | <p>Charter schools in Louisiana receive funds from their local school district, the Recovery School District (RSD), or the Louisiana Department of Education (LDE), depending on their type.</p> <p>RSD charter schools receive federal funds directly, because by law they are individual school districts.</p> | <p>Property and sales taxes levied by the local board are transferred to the RSD based on the MFP.</p> <p>The RSD cannot have monetary reserves and must partner with local districts to borrow money when needed.</p> |

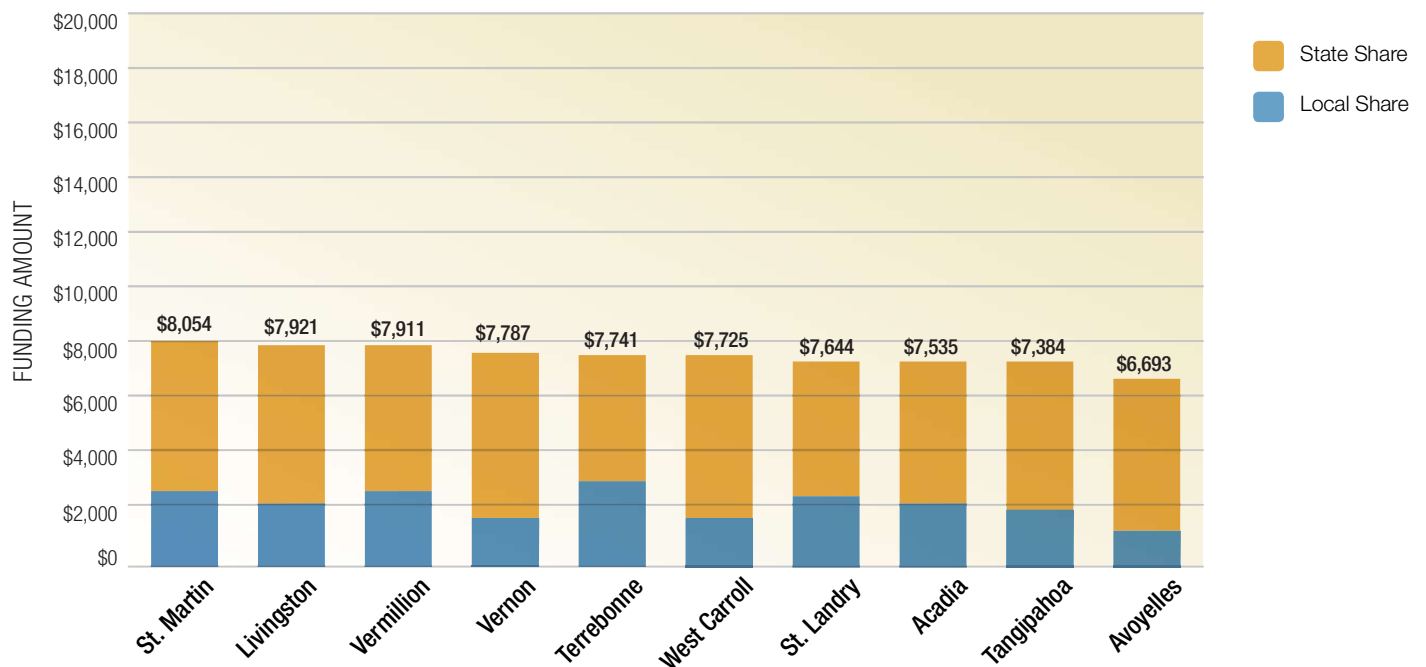
2011-12 Per Pupil State and Local Funding by School District

Average total state and local funding in Louisiana is \$9,322 per pupil. The difference between the most funded and the least funded parish is over \$12,000 per pupil.

The 10 Districts with the Highest Total State and Local Funding per Pupil



The 10 Districts with the Lowest Total State and Local Funding per Pupil

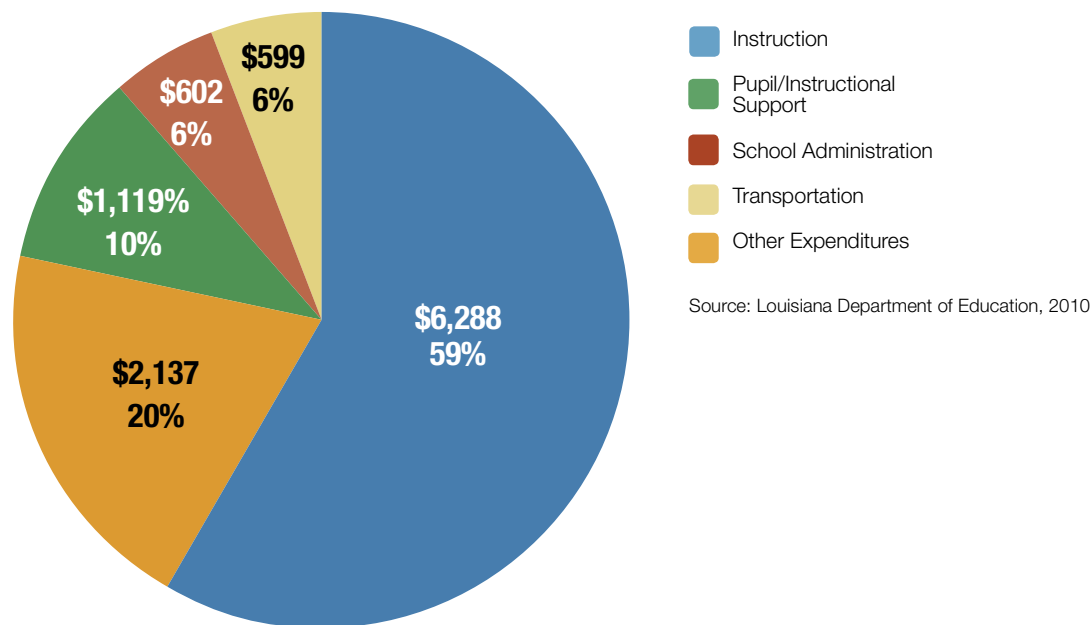


Source: Louisiana Department of Education, Minimum Foundation Budget Letter 2011-12

A Closer Look at School Funding in Louisiana

Per-Pupil Expenditures by Major Category for All Public Schools in Louisiana, 2009-10

Total expenditures average \$10,745 per pupil. In addition, central office overhead is \$1,529 per pupil on average.



Louisiana Compared to the U.S.

Education Week (a national education news and information source) publishes an annual report called *Quality Counts*, which focuses on state education policies. The report includes a financial analysis section that evaluates and ranks states. Highlights of the 2012 report's findings for Louisiana are below.

- Louisiana's overall funding grade is up from C- to C from last year's report.
- Louisiana ranks 22nd in coefficient of variation, the amount of funding disparity across districts.
- Louisiana ranks 39th in tax effort, state expenditures on K-12 education as a percent of Louisiana's taxable resources.
- Louisiana ranks 18th in adjusted per-pupil expenditures.
- On average, 36% of students in Louisiana school districts are funded above the national per-pupil funding average.
- On average, Louisiana school districts spend 94% of the total funding needed to bring all students to the median level.