



New Orleans by the Numbers: School Performance Scores, 2012

November 2012

Scott S. Cowen Institute for
Public Education Initiatives
Tulane University
200 Broadway Street, Suite 108
New Orleans, Louisiana 70118
504-274-3690
<http://education.tulane.edu>

The Scott S. Cowen Institute for Public Education Initiatives at Tulane University launched the *NOLA by the Numbers* series in October 2010. This series aims to provide journalists, policymakers, community leaders, and the public with a timely and comprehensive review of state-released school-level data on public schools in New Orleans. This briefing focuses on school performance scores and letter grades for the 2011-12 school year. It, and others released by the Cowen Institute in the past, can be found at <http://education.tulane.edu>.

Each year, the Louisiana Department of Education (LDOE) calculates a numerical School Performance Score (SPS) for each public school in the state. Scores range from 0 to over 200 and are based on how well each student performed on the state's standardized tests (LEAP, iLEAP, and End of Course), dropout rates, attendance rates, and a graduation index. Letter grades A-F correspond to a school's SPS. In 2012, schools had to earn a score of at least 75 to avoid earning an F, up from 65 last year.

Beginning with the 2012-13 academic year, the LDOE will implement a revised accountability system and letter grade scale. More details about the changes to the SPS formula and letter grade scale are available here: <http://www.louisianaschools.net/lde/uploads/19942.pdf>.

Fast Facts

- The 2012 District Performance Score (DPS) for all public schools in Orleans Parish was 93.7, earning the city a C, up 13 percent from an 83.2 or D in 2011. The state also earned a C with a 2012 performance score of 100.5, up 7 percent from 93.9 in 2011.
- Orleans Parish School Board (OPSB) schools received a 2012 DPS of 133.8, the second highest in the state, while the Recovery School District schools in New Orleans (RSD-NO) earned a 2012 DPS of 76.7, the fourth lowest in the state. Charter schools outperformed direct-run schools in both districts.
- At the 2012 letter grade scale, the number of F schools in New Orleans decreased from 39 schools in 2011 to 32 schools in 2012.
- Of the 67 New Orleans schools with both 2011 and 2012 scores, 49 schools made progress and 46 (nearly 70 percent) were designated top gains schools, meaning they met their growth target for 2012. By comparison, 35 percent of schools across the state were top gains schools.
- New Orleans was home to both the highest performing school in the state (197.6) and the lowest performing non-alternative school in the state (27.3).



Public School Accountability in Louisiana

The Louisiana Department of Education (LDOE) annually assigns public schools a School Performance Score (SPS) between 0 and over 200 based on student performance on the state’s standardized tests, dropout rates, attendance, and a graduation index. The LDOE and state school board use the SPS to inform critical decisions, including charter reauthorization and Recovery School District (RSD) takeovers.

The SPS is primarily based on the state’s standardized tests: LEAP (grades 4 and 8), *i*LEAP (grades 3, 5, 6, 7, and 9), and End of Course (grades 9, 10, and 11). High school scores also include a graduation index, which is based on a cohort of students that enter the ninth grade in a given year and assigns points based on students’ graduation outcomes. School performance scores for the 2011-12 school year were based on the following calculationsⁱ:

K-6 schools	Student test scores (90%); Attendance (10%)
K-8 & 7-8 schools	Student test scores (90%); Attendance (5%); Dropouts (5%)
9-12 schools	Student test scores (70%); Graduation Index (30%)

A baseline SPS is calculated using two years of data and is used to assign schools a corresponding letter grade A-F. (Prior to 2011, schools were assigned performance rating labels instead of letter grades, with schools earning an SPS below 60 deemed “academically unacceptable.”) Table 1 illustrates the letter grade scale for the 2011-12 school year and corresponding test performance. In 2012, schools had to earn a score of at least 75 to avoid receiving an F, up from 65 in 2011.

Table 1: 2012 Letter Grade Scale

Grade	SPS Range	Approx. % of Students at Grade Level
A	120.0 or above	88-100%
B	105.0-119.9	76-87%
C	90.0-104.9	64-75%
D	75.0-89.9	39-63%
F	0.0-74.9	0-38%

Source: BESE Bulletin 11, §1101.

District performance scores and the state performance score are calculated using the same formula as the school performance score, aggregating all of the

students in the district or state, but using only one year of data.ⁱⁱ

Schools also receive a growth SPS, which is based on just one year of test scores. The growth SPS is compared to the previous year’s baseline SPS to determine if a school met its growth target. Growth targets represent the amount of progress a school must make to reach the state’s SPS goal of 120 by the year 2014, ranging from 2 to 10 points.ⁱⁱⁱ In 2011-12, the LDOE used the growth SPS and scores for student subgroups to name top gains schools that will receive monetary rewards.^{iv}

Not all schools receive a baseline SPS each year. Because the score is based on two years of data, schools in their first year of operation—including schools in their first year under a new charter operator—do not receive a score. In addition, some schools without students in tested grades (grades 3-11) do not get an SPS. Lastly, the LDOE does not give an SPS to schools that closed at the conclusion of the academic year. Of the 91 public schools in New Orleans open in the 2011-12 school year, 12 did not receive a 2012 SPS, the smallest number of un-scored schools since 2009.

Beginning with the 2012-13 academic year, schools will receive letter grades that are aligned with a new accountability system.^v Scores will range from 0 to 100, with a score below 50 earning an F. Among the changes, elementary schools will be evaluated almost entirely on standardized test performance, while high school SPS calculations will include four components of equal weight: End of Course tests, a revised graduation index, cohort graduation rate, and the ACT. Schools can also earn up to 10 bonus points for growth among their non-proficient students. In addition, Louisiana is transitioning to new assessments that align with the Common Core State Standards by 2014-15.

New Orleans’ Public School Performance

If all public schools in New Orleans were considered a single district, their 2012 district performance score would be 93.7, a 10.5 point increase from their 2011 score of 83.2.^{vi} By comparison, the state performance score increased 6.6 points from 93.9 in 2011 to 100.5 in 2012. Together, New Orleans’ public schools have improved over 40 percent since 2008 when its district performance score would have been 66.4, making it the most improved school district in the state.^{vii}

Table 2: School Performance Scores by School Type, 2008-2012

	2008	2009	2010	2011	2012	2011-2012 Change		2008-2012 Change	
						#	%	#	%
BESE Charter	82.3	91.4	87.8	97.5	100.9	3.4	3.5%	18.6	22.7%
OPSB Charter	102.8	107.0	114.0	130.4	138.4	8.0	6.2%	35.6	34.6%
OPSB Direct-Run	85.9	93.7	97.4	108.6	102.0	-6.6	-6.1%	16.1	18.8%
RSD Charter	64.3	67.9	74.7	77.5	80.2	2.7	3.5%	15.9	24.6%
RSD Direct-Run	39.4	41.7	48.9	53.1	65.4	12.3	23.1%	26.0	65.9%
OPSB	96.1	104.3	110.3	118.0	133.8	15.8	13.4%	37.7	39.2%
RSD-NO	51.4	54.4	60.6	69.2	76.7	7.5	10.8%	25.3	49.2%
New Orleans	66.4	70.6	N/A	83.2	93.7	10.5	12.6%	27.3	41.1%
Louisiana	86.3	91.0	91.8	93.9	100.5	6.6	7.0%	14.2	16.5%

Note: OPSB, RSD-NO, New Orleans, and Louisiana are district/state performance scores calculated by the LDOE; individual school types are weighted averages of school performance scores calculated by the Cowen Institute.

Source: Louisiana Department of Education, *School Performance Scores, 2008, 2009, 2010, 2011, 2012*.

Both school districts, the Orleans Parish School Board (OPSB) and the Recovery School District (RSD-NO), saw improvement from 2011, with nearly three-quarters (73 percent) of schools in New Orleans making gains. OPSB schools received a 2012 district performance score of 133.8, the second highest in the state and up from 118.0 in 2011. On the other hand, RSD-NO schools earned a 2012 district performance score of 76.7, the fourth lowest in the state but an increase from 69.2 and third lowest in the state in 2011. RSD-NO schools were taken over by the state in 2005 due to low performance scores, so their lower scores compared to the OPSB are to be expected. Additionally, one-third of the OPSB schools are magnet schools.

High School Performance Scores

High school performance scores in New Orleans have been impacted by changes in the way the scores were calculated. First, many New Orleans' high schools' scores included the graduation index for the first time in either 2011 or 2012 when their first post-Katrina cohort graduated.^{viii} In addition, the transition to End of Course tests, which fully replaced Graduate Exit Exams in the SPS calculation in 2012 and have generally garnered higher student performance, contributed to higher high school scores in 2012.^{ix}

According to the LDOE, about 87 percent of schools in Louisiana with high school grades saw growth, compared with about 77 percent of all schools.^x In New Orleans, schools with high school grades improved an average of nearly 14 points from 2011 to 2012 compared to just 4 points for elementary schools. Of the three high schools that did

not see progress this year, two are relatively new schools that have not yet had a full graduating class and, therefore, their scores did not include the graduation index. The OPSB has a higher percentage of its students in high schools compared to the RSD-NO, meaning the bump in high school scores influenced the OPSB's district performance score more so than the RSD's.

The upcoming changes in Louisiana's accountability system will minimize the importance of End of Course tests and the graduation index, which together will account for just 50 percent of a high school's SPS. In addition, changes to the graduation index formula will "no longer include illogically-weighted indices," according to the LDOE.^{xi} As a result, some high schools may see a dip in their performance score in 2013.

Performance by School Type

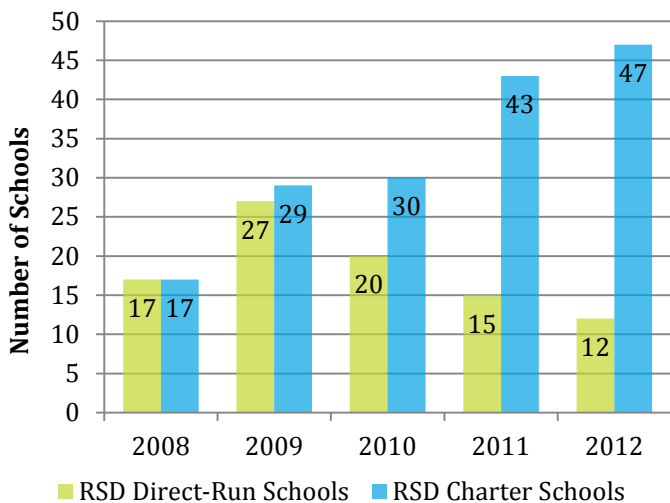
Both the OPSB and the RSD-NO have embraced charter schools in the years since Hurricane Katrina, and in both districts charter schools generally outperformed direct-run schools in 2012. In the OPSB, direct-run schools were the only school type to see its average SPS decline from 2011 to 2012, from 108.6 to 102.0. Though they have improved nearly 20 percent from 2008 to 2012, the gains are driven largely by two large high schools that had dramatic gains between 2010 and 2011 due to the first-time inclusion of the graduation index. Nonetheless, OPSB direct-run schools together outperformed the state.

OPSB charter schools, on the other hand, were the highest performing school type in New Orleans for the fifth year in a row. OPSB charter schools

improved 6 percent from 2011 to 2012 and nearly 35 percent from 2008 to 2012, driven in part by large high school gains in 2011 from the first-time inclusion of the graduation index, though elementary schools also made notable improvements. Of the 11 OPSB charter schools, 10 made progress from 2011 and nine were top gains schools.

Differences between RSD charter and direct-run schools are also noteworthy. RSD direct-run schools' average SPS improved over 12 points from 2011 to 2012 and 26 points from 2008 to 2012; however, much of that improvement is a result of the RSD's policy of closing or transforming its failing direct-run schools. As shown in Figure 1 below, RSD charter schools make up an increasingly large share of all RSD schools as the number of RSD direct-run schools decreases each year.

Figure 1: Number of RSD-NO Schools Receiving an SPS by Type, 2008-2012



Source: Louisiana Department of Education, School Performance Scores, 2008, 2009, 2010, 2011, and 2012.

RSD direct-run schools' average SPS gains are, in part, a result of the decrease in the number of failing schools included in the average each year. Nonetheless, the few RSD direct-run schools that are still open have made notable progress, though from a low baseline. RSD charter schools, on the other hand, each year include new charter schools that took over failing direct-run schools and generally have low scores in their initial years. Even as older RSD charter schools make gains, new lower performing charter schools contribute to a lower average SPS.

Lastly, the 2012 average SPS for BESE charter schools in New Orleans fell in between the RSD and

the OPSB at 100.3, up slightly from 97.5 in 2011. However, the average SPS for BESE schools is somewhat misleading as just three BESE charter schools were given an SPS in 2012 and only two received an SPS in the previous years. In 2012, BESE charter schools included one B school and two D schools; one of the D schools received an SPS for the first time in 2012. The other two schools have made notable progress each year since 2008, averaging a 20 point increase from 2008 to 2012.

Letter Grades

New Orleans' 2012 district performance score of 93.7 puts it in the C range for the first time after many years of D grades. The OPSB earned an A, up from a B in 2010 and 2011 and a C in the previous years; RSD-NO schools earned a D, which is the same grade as 2010 and 2011, but up from an F in the previous years. About 35 percent of schools in New Orleans earned an F in 2012, compared to about 10 percent of schools in Louisiana. Similarly, New Orleans had 20 percent of its schools earn an A or B, while Louisiana had about 35 percent.

Table 3: 2012 Letter Grades in New Orleans

	Schools		Students	
	#	%	#	%
A	7	7.7%	6,098	14.5%
B	11	12.1%	6,152	14.6%
C	9	9.9%	4,700	11.2%
D	20	21.9%	8,660	20.6%
F	32	35.2%	13,551	32.2%
Un-scored	12	13.2%	2,869	6.8%
Total	91	100.0%	42,030	100.0%

Source: Louisiana Department of Education, 2012 School Performance Scores and October 2011 Student Enrollment.

The number of F schools in New Orleans increased from 21 in 2011 to 32 in 2012 as a result of the more rigorous grade scale. In 2012, an SPS below 75 earned an F; this is up from 65 in 2011 and 60 in previous years. If the 2012 scale had been in place in previous years, the number of F schools would have decreased from 39 to 32. On the other hand, if the scale from 2010 and before were still in place, just 10 New Orleans schools would be failing in 2012. As a percentage of total public school enrollment in New Orleans, 32 percent of students attended schools with an SPS below 75 in the 2011-12 school year, down from 77 percent in the school year prior to Hurricane Katrina.

Figures 2a and 2b: Percentage of Students in New Orleans Schools by Letter Grade, 2008-2012

Figure 2a: 2012 Grade Scale (F=SPS <75)

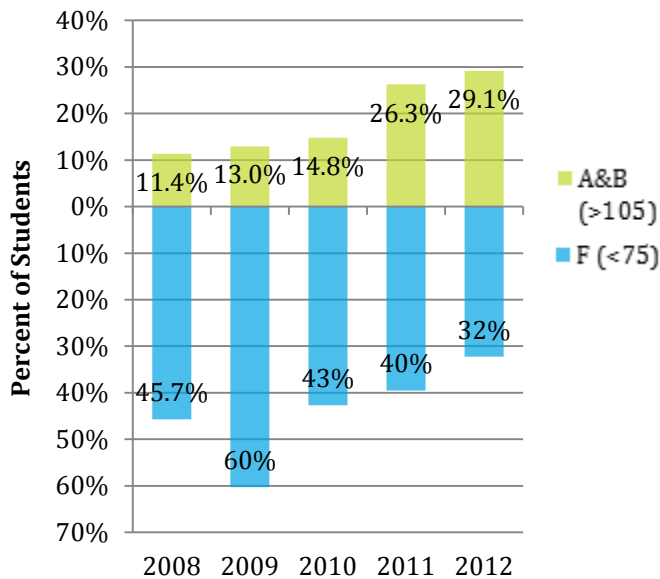
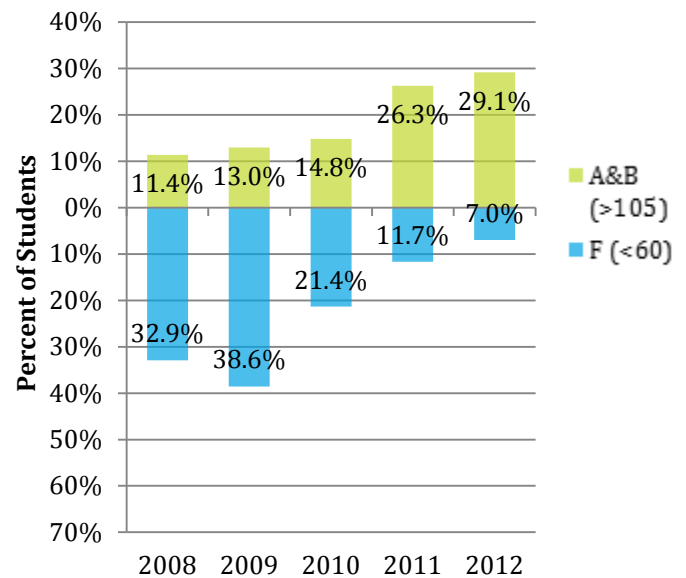


Figure 2b: 2010 Grade Scale (F=SPS <60)



Source: Louisiana Department of Education, School Performance Scores and October Student Enrollment, 2008, 2009, 2010, 2012.

Figures 2a and 2b, above, show the percentage of all public school students in New Orleans attending F schools and A and B schools for each year from 2008 to 2012 based on the 2012 grade scale and the 2010 and prior grade scale. Overall there has been a decrease in the number of F schools and the percentage of students enrolled in these schools each year, with the exception of 2009. This is due in part to the large number of schools that did not receive an SPS in 2008 (27 of 80), most of which were very low performing the following year when they did get an SPS. Indeed, from 2008 to 2009 the number of schools with an SPS above 60 or 75 increased even as the number of schools below those markers also increased.

Overall, the number of top performing A and B schools in New Orleans has increased each year with 18 schools receiving an SPS above 105 in 2012 compared to six schools in 2008. The percentage of students in A and B schools has also nearly tripled. However, two schools that had previously received Bs dropped down to Cs in 2012, while two high schools moved from Cs in 2011 to Bs in 2012, at least in part due to this year's inflated high school scores. Nonetheless, the number of A schools in New Orleans (7) was the highest it has been since 2005.

Growth and Top Gains Schools

Of the 67 New Orleans schools with both an SPS in 2011 and 2012, 49 schools made progress and 46 schools (nearly 70 percent) were designated top gains schools, compared to 35 percent of schools receiving the top gains designation across the state. The median growth for New Orleans schools from 2011 to 2012 was 4.2 points, the same as schools across the state. Of the 38 New Orleans schools that have received an SPS since at least 2008, all but one has made progress. The New Orleans average gain between 2008 and 2012 was 20 points, compared to 13.5 points for the state.

Individual school growth or decline in New Orleans ranged from a loss of 17.1 points to a gain of 27.8 points. The three highest growth schools, Lake Area, Cohen, and Sci Academy, are all high schools whose gains were due in part to the graduation index and End of Course exams. Beginning in the 2012-13 school year, Cohen is being transformed into a charter school due to its SPS, which, despite impressive growth, remains low at 45.5. Excluding schools with high school grades, both districts saw lower average growth - 2.5 points for RSD-NO elementary schools and 1.2 points for OPSB elementary schools.

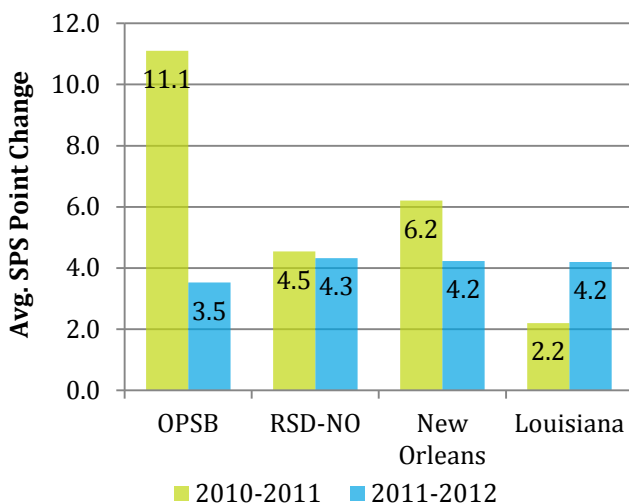
Table 4: Highest and Lowest Growth Schools in New Orleans, 2011-2012

	Baseline SPS		2011- 2012 Change	
	2011	2012	#	%
Lowest Growth Schools				
KIPP Central City Primary ^{xii} (K-3)	105.6	88.5	-17.1	-16.2%
Robert Russa Moton Charter School (PK-7)	111.6	100.1	-11.5	-10.3%
Akili Academy of New Orleans (K-4)	106.6	96.2	-10.4	-9.8%
Top Growth Schools				
Sci Academy (9-12)	96.4	111.8	15.4	16.0%
Walter L. Cohen High School (9-12)	28.8	45.5	16.7	58.0%
Lake Area New Tech Early College High School (9-12)	70.1	97.9	27.8	39.7%

Source: Louisiana Department of Education "2012 School Performance Scores/Letter Grades," October 2012.

As illustrated in Figure 3, RSD-NO schools grew more, on average, than did OPSB schools from 2011 to 2012, though from a lower starting point. Both districts had lower average gains from 2011 to 2012 (4.2 points) than from 2010 to 2011 (6.2 points), while state-wide average growth was larger from 2011 to 2012 (4.2 points) than the previous years (2.2 points). OPSB schools, in particular, benefitted in 2011 from a large boost in high school scores due to the graduation index, resulting in very high gains from 2010 to 2011.

Figure 3: Average SPS Point Change, 2010-2011 and 2011-2012



Source: Louisiana Department of Education, "2012 School Performance Scores/Letter Grades," October 2012.

From 2011 to 2012, RSD direct-run schools improved the most of all school types, gaining over 7 points on average; however, because of their very low baseline, just three of the 11 schools (27 percent) met their growth target. Though RSD charter schools

grew slightly less on average (3.5 points) than RSD direct-run schools, they had a slightly higher rate of success in terms of schools meeting their growth targets, with 13 of 39 schools (33 percent) noted as top gains schools.

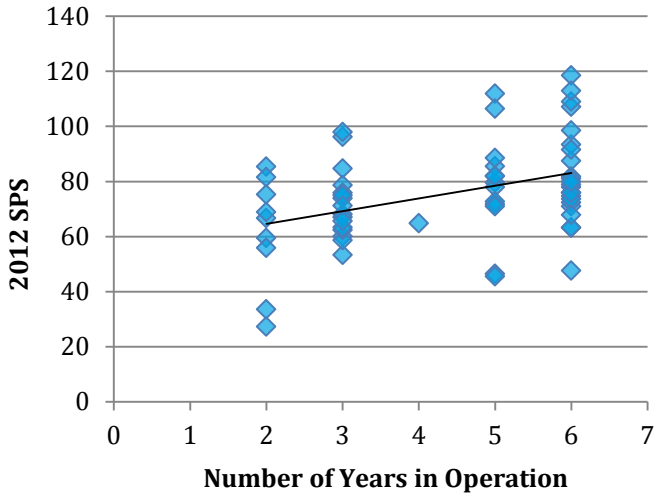
OPSB direct-run schools were the only school type to see an average decrease in scores from 2011 to 2012 (-3.6 points), mostly driven by a single school's 10.2 point drop. None of the four OPSB direct-run schools were top gains schools. OPSB charter schools, on the other hand, gained an impressive 6.1 points even from a high starting point, with nine of the 11 schools (82 percent) designated top gains schools. The two BESE charter schools with 2011 and 2012 scores gained an average 7.2 points, with the higher performing of the two earning top gains status while the other did not.

School Performance and Transformation Schools

As the RSD-NO has gradually closed its low performing direct-run schools and transformed them into charter schools, the number and type of schools open in New Orleans has shifted over time. New RSD charter schools—called transformation schools—open each year, sometimes completely taking over a direct-run school and sometimes gradually expanding one grade a year. Among all New Orleans schools, older schools on average outperformed schools opened more recently. This holds true even when excluding the OPSB, whose schools were almost all opened in 2006 and are higher performing than RSD-NO schools. Excluding OPSB schools, the average SPS for schools open two years and receiving an SPS for the first time in 2012 was 65.6, compared to 72.0 for schools open three years, 78.5 for schools

open four or five years and 85.6 for schools open for six or more years.

Figure 4: 2012 SPS by Years in Operation, RSD-NO and BESE Schools Only



Source: Louisiana Department of Education, "2012 School Performance Scores/Letter Grades," October 2012.

Notably, newer RSD-NO and BESE schools in New Orleans also grew faster from 2011 to 2012 than older schools. Schools open three years gained 6.3 points on average compared to 3.8 points by schools four or five years old and 3.6 points by schools six or more years old. Thus, the relationship between a school's age and its SPS can be explained both by annual performance gains, which are more dramatic in a school's early years, as well as the RSD's policy of closing low-performing charter schools, which means only the relatively high-performing schools stay open for more than a few years.

Conclusion

The 2012 school performance scores and letter grades illustrate that New Orleans schools are continuing their post-Katrina trajectory, improving steadily each year, though the changes in SPS calculations—particularly at the high school level—make it difficult to interpret the trends. Both the OPSB and the RSD-NO made significant gains from 2011 to 2012, though the OPSB district performance score increased twice as many points as the RSD-NO score despite a higher starting point. Even as the RSD-NO closes low-performing schools, which contributes to higher average performance, its growth has slowed somewhat as fewer schools are in the initial start-up phase where growth rates seem to be highest. Many RSD-NO schools are making impressive gains even as they serve a predominantly low-income student body. Nonetheless, RSD-NO schools must maintain or exceed their current rate of improvement in order to reach the state average in the coming years.

While the analysis in this briefing provides some guidance and insight on performance trends, the upcoming changes to Louisiana's public school accountability system will undoubtedly have a major impact. In particular, high schools in New Orleans, which saw unusually large gains in 2012, may see their performance scores dip when the new SPS calculation is used in 2013. Additionally, as new assessments are phased in beginning in 2013-14, schools may see initially low scores as teacher and students adapt to the changes. Lastly, many New Orleans schools will be impacted by the new bonus points, which will reward those schools making gains among the lowest performing students.

Appendix

School/School Type	Grade Levels (2011-12)	2012			Previous Years' Baseline SPS				2011-12 Enrollment	
		Baseline SPS	Letter Grade	Top Gain School	2008	2009	2010	2011	Student Count	% Free/Reduced Lunch
BESE Charter Schools										
International High School of New Orleans	9-11	81.5	D	N/A					296	84.80%
International School of Louisiana	K-8	118.5	B	Yes	97.5	102.7	103.0	110.8	627	53.91%
Lycee Francais de la Nouvelle-Orleans	PK-K	NEW	N/A	N/A					127	N/A
Milestone SABIS Academy of New Orleans	K-8	87.5	D	No	69.4	74.2	76.3	80.9	395	97.22%
New Orleans Military and Maritime Academy	9	NEW	N/A	N/A					102	51.96%
BESE Charter School Average		100.9	C		82.3	91.4	87.9	97.5	1,547	72.25%
OPSB Charter Schools										
Alice M. Harte Elementary Charter School	K-8	112.5	B	Yes	82.7	88.9	94.1	101.2	648	70.37%
Audubon Charter School*	PK-8	125.3	A	Yes	108.9	109.8	114.1	120.4	789	46.26%
Benjamin Franklin High School*	9-12	197.6	A	No	165.2	167.5	169.8	186.2	730	29.59%
Edna Karr High School	9-12	120.7	A	Yes	80.4	82.9	87.6	115.0	928	80.71%
Edward Hynes Charter School	K-8	121.7	A	Yes	103.9	107.2	112.1	117.2	583	55.40%
Einstein Charter School	PK-8	102.1	C	Yes	84.9	85.3	89.1	96.4	482	92.32%
Lake Forest Elementary Charter School*	K-8	151.9	A	Yes	122.1	129.0	140.4	147.8	478	82.64%
Lusher Charter School*	K-12	167.1	A	Yes	134.9	139.4	146.2	155.4	1,709	23.82%
New Orleans Charter Science and Mathematics HS	9-12	115.7	B	Yes	75.2	76.7	81.0	106.4	370	73.24%
Robert Russa Moton Charter School	PK-7	100.1	C	No	90.8	97.6	114.2	111.6	323	>99.00%
Warren Easton Senior High School	9-12	130.3	A	Yes	76.6	84.0	92.6	120.2	881	86.49%
OPSB Charter School Average		138.4	A		102.8	107.0	114.0	130.4	7,921	59.47%
OPSB Direct-Run Schools										
Architecture, Design & Engineering High School	9-12	54.1	F	N/A					195	78.46%
Benjamin Franklin Elem. Math and Science*	PK-6	108.5	B	No	107.2	109.1	114.4	111.5	607	79.90%
Eleanor McMain Secondary School	7-12	109	B	No	82.1	84.8	88.9	108	741	82.05%
Mahalia Jackson Elementary School	PK-1	103.8	C	N/A					95	96.84%
Mary Bethune Elementary Literature/Technology	PK-6	111.9	B	No	108	117.6	123.7	118.7	376	97.87%
McDonogh #35 Senior High School	7-12	97.8	C	No	77.9	82.5	83.9	103.3	869	86.65%
The Alternative Learning Institute	9-12	N/A	N/A	N/A					106	>99.00%
Youth Study Center	7-12	N/A	N/A	N/A					22	>99.00%
OPSB Direct-Run School Average		102.0	C		85.9	93.7	97.4	108.6	3,047	85.7%

School/School Type	Grade Levels (2011-12)	2012			Previous Years' Baseline SPS				2011-12 Enrollment	
		Baseline SPS	Letter Grade	Top Gain School	2008	2009	2010	2011	Student Count	% Free/Reduced Lunch
RSD Charter Schools										
Akili Academy of New Orleans	K-4	96.2	C	No				106.6	307	96.74%
Algiers Technology Academy	9-12	85.5	D	No		49.9	55.0	76.1	290	70.00%
Andrew H. Wilson Charter School	K-8	77.9	D	No		62.3	59.0	70.3	556	64.93%
Arise Academy	K-4	78.6	D	Yes				67.1	311	98.07%
Arthur Ashe Charter School	K-8	82.0	D	No		67.2	83.8	82.0	426	97.89%
Batiste Cultural Arts Academy at Live Oak Elem	PK-8	63.3	F	No				60.8	628	92.36%
Benjamin E. Mays Preparatory School	K-5	53.3	F	No				51.3	313	77.64%
Crocker Arts and Technology School	PK-5	64.8	F	No			67.2	65.2	244	92.21%
Dr. Martin Luther King Charter School for Sci/Tech	PK-12	98.5	C	No	89.3	91.4	90.1	94.2	646	98.45%
Dwight D. Eisenhower Elementary School	PK-8	81.7	D	No	66.7	70.5	80.0	85.4	626	80.99%
Edgar P. Harney Spirit of Excellence Academy	K-8	71.2	F	Yes				66.7	366	>99.00%
Esperanza Charter School	K-8	68.0	F	Yes				62.1	421	94.06%
Fannie C. Williams Charter School	PK-8	75.2	D	N/A					504	95.24%
Gentilly Terrace Elementary School	PK-8	74.9	F	Yes				65.3	435	88.74%
Harriet Tubman Charter School	K-8	66.6	F	N/A					521	93.47%
James M. Singleton Charter School	PK-8	73.6	F	No	55.2	58.8	70.1	73.3	714	>99.00%
John Dibert Community School	K-8	73.8	F	Yes				64.7	421	98.10%
Joseph S. Clark Preparatory High School	9-12	55.8	F	N/A					436	93.81%
KIPP Believe College Prep (Phillips)	K, 4-8	112.9	B	No	98.6	97.2	106.5	111.8	478	93.72%
KIPP Central City Academy	5-8	106.4	B	No		75.8	85.2	107.5	397	95.72%
KIPP Central City Primary	K-3	88.5	D	No		114.6	120.6	105.6	421	96.67%
KIPP McDonogh 15 School for the Creative Arts	K-8	91.5	C	No	94.6	88.9	87.7	91.7	557	94.08%
KIPP New Orleans Leadership Academy	K, 5-6	75.8	D	No				74.9	313	94.25%
KIPP Renaissance High School	9-10	85.3	D	N/A					296	85.81%
Lafayette Academy	PK-7	93.4	C	No	58.8	63.9	77.3	88.5	818	92.30%
Lagniappe Academy of New Orleans	K-1, 5-6	58.6	F	No				57.4	115	70.43%
Lake Area New Tech Early College High School	9-12	97.9	C	Yes				70.1	603	89.22%
Langston Hughes Academy Charter School	K-8	CLOSED	N/A	N/A		64.7	74.0	85.1	617	99.50%
Martin Behrman Elementary School	PK-8	107.1	B	No	92.8	95.3	99.3	108.1	684	86.55%
McDonogh #32 Elementary School	K-8	63.3	F	No	41.9	55.4	60.0	62.3	400	93.25%
McDonogh City Park Academy	PK-8	67.8	F	No	48.6	56.6	70.5	71.9	526	91.25%
McDonogh #42 Elementary Charter School	PK-8	CLOSED	N/A	N/A		62.0	65.3	62.6	527	98.48%
Miller-McCoy Academy for Mathematics and Business	5-12	71.0	F	Yes		67.5	69.5	71.2	562	76.69%

School/School Type	Grade Levels (2011-12)	2012			Previous Years' Baseline SPS				2011-12 Enrollment	
		Baseline SPS	Letter Grade	Top Gain School	2008	2009	2010	2011	Student Count	% Free/Reduced Lunch
Morris Jeff Community School	PK-3	84.6	D	N/A					261	62.84%
Nelson Elementary School	PK-8	79.9	D	Yes	65.5	63.7	65.2	69.8	485	97.53%
O. Perry Walker Senior High School	9-12	108.9	B	Yes	48.8	56.3	68.4	95.5	890	85.96%
Pierre A. Capdau Learning Academy	K-8	75.8	D	Yes	62.6	66.4	71.2	70.7	340	>99.00%
Pride College Preparatory Academy	K-4	62.4	F	No				64.4	248	96.77%
Reed Elementary School	PK-8	68.9	F	N/A					650	95.08%
ReNEW Accelerated High School, City Park Campus	8-12	27.3	F	N/A					155	82.58%
ReNEW Accelerated High School, West Bank Campus	8-12	33.5	F	N/A					137	84.67%
Samuel J. Green Charter School	K-8	81.0	D	No	61.6	66.5	73.6	78.1	518	97.10%
Sci Academy	9-12	111.8	B	No		73.6	89.2	96.4	334	92.22%
SciTech Academy at Laurel Elementary	PK-8	67.0	F	Yes				60.6	620	97.26%
Sojourner Truth Academy	9-12	CLOSED	N/A	N/A			53.5	48.7	251	93.23%
Sophie B. Wright Learning Academy	6-12	78.9	D	No	74.3	79.5	83.0	86.2	476	>99.00%
Success Preparatory Academy	K-5	65.6	F	Yes				54.2	380	95.26%
Sylvanie Williams College Prep	K-10	81.9	D	Yes		67.1	73.4	67.9	817	97.31%
The Intercultural Charter School	K-8	72.7	F	No		65.8	66.7	71.9	419	91.89%
William J. Fischer Elementary School	PK-8	72.3	F	No	62.1	61.0	62.9	72.9	665	89.92%
RSD Charter School Average		80.2	D		64.3	67.9	74.7	77.5	23,125	90.73%
RSD Direct-Run Schools										
A.P. Tureaud Elementary School	PK-6	75.9	D	No	70.9	72.4	76.3	78.1	305	92.46%
Abramson Science and Technology School	K-12	59.4	F	N/A					549	77.23%
Benjamin Banneker Elementary School	PK-8	74.7	F	No	54.5	58.9	60.9	67.7	505	87.92%
Dr. Charles Richard Drew Elementary School	4-8	CLOSED	N/A	N/A	34.9	40.7	46.5	50.1	186	90.86%
F.W. Gregory Elementary School	PK	CLOSED	N/A	N/A		37.6	43.8		27	66.67%
G.W. Carver High School	9-12	46.4	F	No		28.8	31.9	44.8	335	87.46%
H.C. Schaumburg Elementary School	PK-8	71.8	F	No		61.7	70.6	69.9	615	92.52%
James Weldon Johnson School	PK-8	70.9	F	No	53.9	51.8	58.6	67.1	308	>99.00%
John McDonogh Senior High School	9-12	CLOSED	N/A	N/A	20.9	21.6	32.2	41.8	271	80.81%
Joseph A. Craig School	PK-8	CLOSED	N/A	N/A	52.7	48.7	45.2	48.3	550	93.09%
L. B. Landry High School	7-11	60.0	F	No				46.7	736	73.64%
Mary D. Coghill Elementary School	PK-8	79.5	D	No		53.3	65.5	75.2	654	95.11%
Murray Henderson Elementary School	PK-6	63.2	F	Yes	61.4	62.3	63.4	57.5	222	95.50%
Paul B. Habans Elementary School	PK-6	77.9	D	Yes	55.9	59.2	62.4	62.9	370	87.03%

School/School Type	Grade Levels (2011-12)	2012			Previous Years' Baseline SPS				2011-12 Enrollment	
		Baseline SPS	Letter Grade	Top Gain School	2008	2009	2010	2011	Student Count	% Free/Reduced Lunch
Sarah Towles Reed Senior High School	9-12	47.6	F	No	30.0	33.3	34.9	33.7	453	75.72%
Schwarz Alternative School	7-12	CLOSED	N/A	N/A		12.3		6.2	40	82.50%
Walter L. Cohen High School	10-12	45.5	F	Yes		20.4	28.2	28.8	257	79.77%
<i>RSD Direct-Run School Average</i>		65.4	F		39.4	41.7	48.9	53.1	6,390	86.4%

*Magnet school

References

ⁱ Louisiana Board of Elementary and Secondary Education (BESE), Bulletin 111 – The LA School, District, and State Accountability System, §303.

ⁱⁱ BESE Bulletin 111, §4301.

ⁱⁱⁱ BESE Bulletin 111, §523.

^{iv} Louisiana Department of Education, “News for Charter Schools,” October, 18, 2012.

^v Louisiana Department of Education, “Accountability Overview,” June 2012.

^{vi} Barry Landry, personal communication, October 23, 2012.

^{vii} Louisiana Department of Education, “2012 District Performance Scores/Letter Grades,” October 2012.

^{viii} Andrew Vanacore, “Louisiana high schools, having boosted grades, are in for a tougher climb,” *Times-Picayune*, October 25, 2012.

^{ix} Ibid.

^x Ibid.

^{xi} U.S. Department of Education, “Louisiana’s ESEA Flexibility Request,” OMB Number: 1810-0708.

^{xii} KIPP Central City Primary reported a 17.1 point loss, but, according to a KIPP representative, this is a misrepresentation. 2012 was the first year the school had a tested grade, meaning its performance was previously an estimate based on the upper-grade scores at KIPP Central City Academy.