

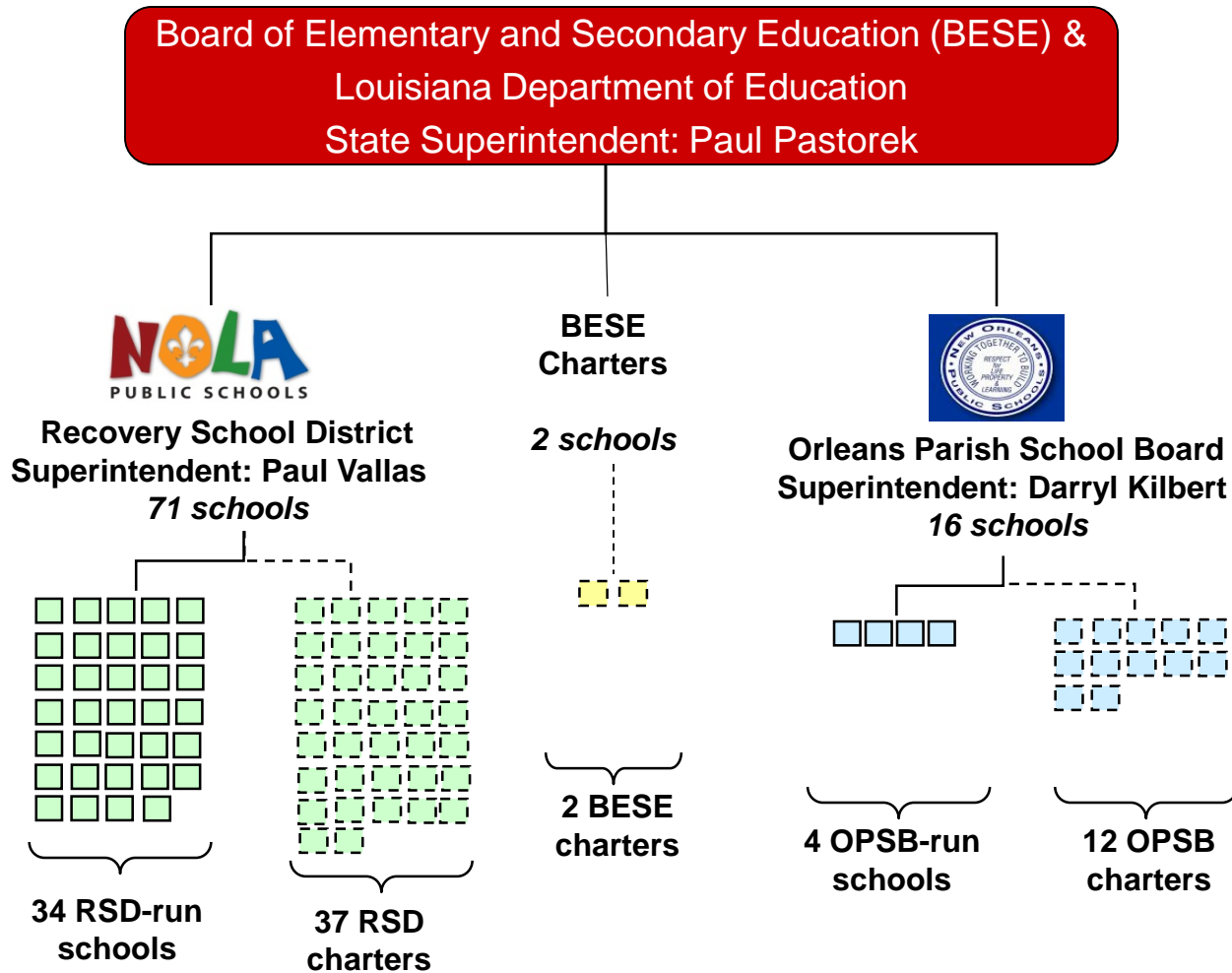


COWEN INSTITUTE
FOR PUBLIC EDUCATION INITIATIVES

PUBLIC EDUCATION IN NEW ORLEANS:

Updated August 2009

GOVERNANCE STRUCTURE



Total: 89 schools

PUBLIC SCHOOLS

Louisiana Board of Elementary and Secondary Education (BESE)

Int. School*

Milestone/Sabis

Recovery School District

RSD Superintendent

| | | | |
|-----------------------|------------------|---------------------|----------------------|
| Habans | Banneker | Bauduit ES | Carver ES |
| Laurel | Clark | Coghill ES | Craig |
| Schwartz | Douglass | Drew | Gregory |
| Sylvanie Williams | Harney | Henderson | Johnson |
| Dibert | Live Oak | Livingston | McDonogh |
| Wicker | Rabouin | Reed K-8 | Schaumberg |
| St. Julian Elementary | Tureaud | Reed HS | Booker T. Washington |
| Fannie C. Williams | Gentilly Terrace | Greater Gentilly HS | Cohen |
| | Carver HS | Inter-National HS | |

Non-Network Charters

| | |
|-----------------|----------------------------|
| McDonogh 42 | Akili Academy |
| Lafayette | Crocker |
| NO College Prep | Intercultural Charter |
| Wright | Sojourner Truth |
| Wilson | Miller-McCoy |
| MLK | Abramson |
| Singleton | Langston Hughes |
| Esperanza | ARISE |
| Mays Prep | Pride |
| Success | McDonogh City Park Academy |

KIPP

| | |
|-------------------|-----------------|
| KIPP Central City | KIPP CC Primary |
| KIPP McDonogh 15 | KIPP Believe |

FirstLine Schools

| | |
|-------|-------------|
| Green | Arthur Ashe |
|-------|-------------|

UNO

| | |
|-------------------|--------|
| Nelson | Capdau |
| Thurgood Marshall | |

Algiers Charter Schools Association

| | |
|--------------|-------|
| Algiers Tech | Harte |
| Behrman | Karr |

Eisenhower

| |
|---------|
| Fischer |
|---------|

Walker

| |
|--------|
| Tubman |
|--------|

| |
|-------------|
| McDonogh 32 |
|-------------|

Advocates for Science & Math Education

| | |
|-----------------|--------------|
| Science Academy | Science High |
|-----------------|--------------|

Orleans Parish School Board

Non-Network Charters

| |
|-----------------------|
| Moton |
| Priestley |
| Easton* |
| Lake Forest* |
| Einstein |
| Lusher* ² |
| Franklin High* |
| Hynes |
| Audubon* ² |

NOPS Superintendent

| |
|-----------------|
| McMain* |
| McDonogh 35* |
| Bethune* |
| Franklin Elem.* |

LEGEND

| |
|---------------|
| BESE charter |
| RSD charter |
| RSD operated |
| OPSB charter |
| OPSB operated |

Notes:

An asterisk (*) next to a school name indicates a selective admissions school. A number two (2) next to a school name indicates two campuses.

Each independent (non-networked) charter school has its own board of directors that it reports to.